



COMBITECH

SANDRA

Radio Communications
Intelligence Solution



Combitech SANDRA is a COMINT software suite that monitors radio communication and provides critical intelligence information to support decision making. SANDRA enables operators to monitor radio frequencies and capture important radio signals remotely across large geographical areas.

Features



Provides radio signal acquisition, processing & reporting



Delivers direction finding & geolocation



Controls multiple sensor sites remotely



Monitors thousands of simultaneous channels

Benefits



PROVIDES DATA TO SUPPORT INTELLIGENCE

Captures, processes and geolocates transmissions.



FOCUS ON ESSENTIAL INFORMATION

Automated tasking function handles the routine tasks and allows operators to focus on essential information.



IMPROVES SITUATIONAL AWARENESS

Collects data for long-term analysis to reveal information about adversaries intent.

How to use Combitech SANDRA?



OBSERVE YOUR
ELECTROMAGNETIC
SURROUNDINGS



AUTOMATE
ROUTINE TASKS



EXAMINE AND ANALYZE
RECORDINGS



TUNE RECEIVERS AND
CHANNELS MANUALLY



TRACK EMITTERS WITH
INTEGRATED MAP FUNCTIONS



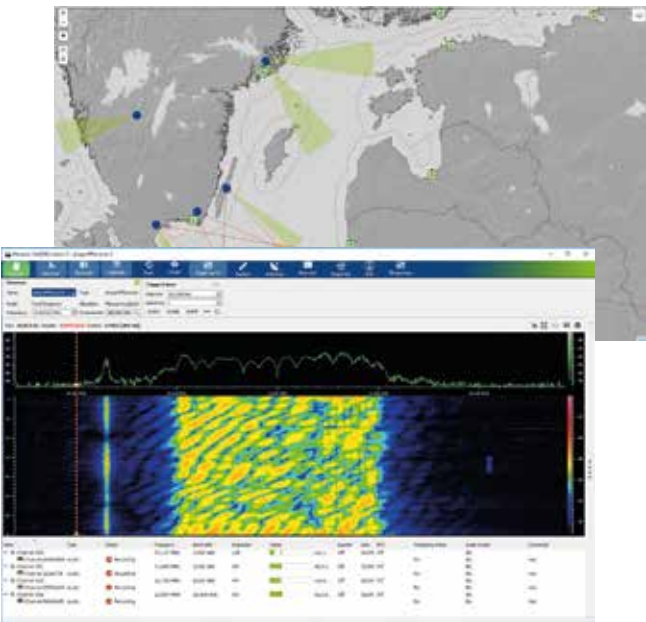
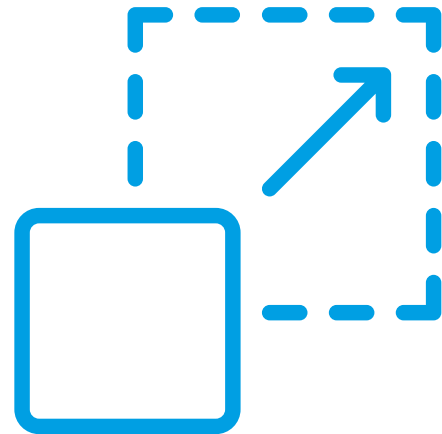
COMBITECH SANDRA

Smooth-running communications monitoring

EASY SCALABILITY AND COST-EFFECTIVE

Offers the best value for your investment!

- From one sensor to nationwide coverage with one system
- Scalable from a single laptop to numerous remote sensor sites
- Tens of concurrent operators and ability for autonomous operations.
- Built-in support for various roles to allow operators to focus on essential information



EASY TO INSTALL & QUICK TO DEPLOY

Get your operations running in no time!

- Extensive and straightforward integration and API into existing hardware infrastructure, systems and subsystems.
- Intuitive user interface and robust user experience speeds up training and makes deployment easy.
- Modern software architecture and automated functions speed up operator workflow and requires less personnel to operate.

STAY TUNED WITH COMBITECH SANDRA

- Monitor and analyze radio communications
- Get reliable data to support intelligence
- Foresee and prevent threatening scenarios



This is how we do the tango.

The “normal way” would be to build a solution full of bells,whistles and horns and then shove it to your systems and force you to change the way you work.

This is not the Combitech Way - we want to make our clients' lives as smooth as possible by adapting our solution to your working environments and infrastructure. We work rigorously to learn how our clients use the systems and how they operate so we can create solution that works for you and not the other way around.

That is why all our products are all equipped with well documented and secure APIs, smart architecture, handy modules and a super smooth UI. We don't want you to stress and sweat over our systems, we do it for you and adapt systems and modules to suit your specific requirements. If something is missing, we'll make it for you, if something is too much, we'll remove it, if something stresses you out, we'll fix it for you.

THE ULTIMATE COMBITECH OFFERING COMBINE OUR SOLUTIONS TOGETHER



SANDRA

Radio Communications Monitoring System software enables your operations to capture the important communication.



SAGA

Digital Signal Recorder System enables your operations to record and process important communication.



SAINT

EW and SIGINT Library System enables your operation to rely on reliable and up to date Electronic Warfare Data.

CAPTURE &
MONITOR
RADIO SIGNALS



RECORD &
PROCESS AUDIO
AND DATA



BUILD, ENRICH &
PROTECT EW DATA,
PREPARE FOR
MODERN THREATS

Combitech SANDRA Features & Technical Specifications


IS SOMETHING MISSING?

YEP, SURE THING!

We left out all the nitty gritty details and cool tech specs because the list is HUGE! You can get the full list by contacting us via email!

Hear from you soon! ✉ solutions@combitech.com

Combitech - your partner in building a safer society



THE COMBITECH WAY

Our core competence lies not only in our accumulated industry knowledge but also in the way we solve our customers problems with an agile, quick-to-respond, easy-to-work-with attitude. We want to make our clients lives as smooth as possible by adapting our software to your working environments and infrastructure. We work rigorously to learn how our clients use the systems and how they operate so we can create software that works for you and not the other way around.

TRUST & UNDERSTANDING

Combitech has a close relationship with the armed forces and the defence sector in the Nordic region. It's a relationship built on mutual understanding of the importance of high security and confidentiality. Over many years we have built up experience, knowledge and an understanding of the industry requirements imposed in terms of technical performance, safety and budgets.

NORDIC PARTNER

Combitech is an independent technical consulting and software engineering company based in Sweden, Finland, Norway and Denmark. Combitech is specialized in advanced defence and cyber security solutions. Combitech is part of defence and security group Saab AB.

Stay tuned with Combitech



Let's start a conversation that won't leave you cold.
Show us your puzzle and we'll solve it the Combitech way!
✉ solutions@combitech.com